



Greater Manchester Green Spaces Fund

Guide for applicants

Last updated: June 2024





What is the Greater Manchester Green Spaces Fund?

In Greater Manchester, the Covid 19 pandemic exacerbated longstanding inequalities, as well as highlighting new ones. It brought into sharp focus the inequalities in the availability of and public's access to good quality green spaces across the city-region. The health and wellbeing benefits that we all get from our natural environment are not shared equally amongst the population, particularly in urban areas.

We need to address these inequalities and ensure that all of Greater Manchester's citizens have a chance to benefit from green space. Creating and connecting people with nature will also support new local jobs and benefit health and wellbeing. All of us must think about how we adapt to climate change and deliver a local nature recovery that is inclusive and fair to all.

People from all walks of life value access to nature, but not everyone is able to benefit to the same extent. People in Greater Manchester's areas experiencing the most inequalities tend to receive a far worse provision of parks and green spaces than their neighbours. Yet we know that the higher the quantity and environmental quality of green spaces found in neighbourhoods, the healthier residents tend to be.

In Greater Manchester, we want to tackle inequalities in public access to green spaces across the city-region and deliver local nature recovery, as set out in the [Greater Manchester 5-year Environment Plan](#). **The Greater Manchester Green Spaces Fund** is helping Greater Manchester to become greener, fairer and more prosperous, by giving small grants to communities in greatest need to create or enhance green space.

The fund is focused on three principles:

- To benefit communities in greatest need of quality green spaces
- To tackle our biodiversity emergency
- To encourage and empower communities to get involved with nature

Small grants will be available for communities experiencing inequalities who want to create new green spaces or improve existing ones in their area. These might be unused areas that people want to open up for wider public access, a community garden, greening a street, or creating a small park or parklet. We are particularly interested in hearing from communities in greatest need, to ensure the fund is used to empower those facing inequalities.

This guidance sets out the types of grants available through the Greater Manchester Green Spaces Fund, what type of organisations are eligible to apply and the criteria we will use to prioritise applications. It also outlines the essential information you will need to provide in order to apply to the Greater Manchester Green Spaces Fund. You should read through this document carefully before applying.



What can be funded?

The fund will be used to support projects which will increase the amount and/or quality of green spaces, by either creating new green spaces or improving spaces by making physical enhancements to create more and better spaces for nature.

We will prioritise projects which will benefit communities experiencing inequalities (for example those experiencing social or economic disadvantage) and lack public access to green space (for example in areas without a public park nearby or lacking greenery).

Applications can be made online [here](#) .

The fund has two types of grants available.

- **Small grants** between £2,000 to £15,000
- **Large grants** between £15,001 to £40,000

These grants will support a wide range of projects on publicly accessible spaces, making physical improvements to the space by creating new green spaces on brownfield land or unused land or paved public space or streets, or improving existing green spaces for people and nature. Projects must be fully costed and can apply only for the specific amount needed for the work.

Examples of the type of projects the Green Spaces Fund could support include:

- Enhancing or creating publicly accessible green spaces for people and wildlife and engaging communities with these new spaces.
- Permanently greening streets or turning unused viable land into green community spaces.
- Creating new permanent parklets or pocket parks and engaging people with these new spaces.
- Cleaning up and restoring green spaces, streams, rivers, canals or ponds (blue spaces) with local communities.
- The development of green corridors linking parks, community gardens or other green spaces.
- Projects that significantly improve the biodiversity of the area and engaging communities with these new spaces.

This is by no means an exhaustive list and we are keen to hear project proposals that meet the aims of the Green Spaces Fund.

PLEASE NOTE: We require a commitment to maintaining the project, as delivered, for a minimum of 3 years following completion of the project.



Essential screening criteria

- Projects must focus on the creation and/or enhancement of green space.
- All applicants must be able to provide proof with their application that they have the landowner's permission for the project and the three years after project completion for maintenance access. A template for this permission letter is available on the application portal.
- Projects must be on land which is freely accessible to the public, not just to the group applying. We expect projects to replicate the accessibility of public parks, which are commonly accessible to the public either at all times or at least dawn to dusk. Confirmation must also be provided that the land will remain accessible to the public after the project is completed.
- If planning permission is required for your project, then this must be obtained and provided with the application before applying to the fund.
- Projects run for 12 months and must be completed by October 2025, therefore projects need to be ready to start in October 2024.

Who is the fund for?

Location

All applications to the fund must be for projects located in Greater Manchester and must be able to provide information on the site where the fund will be spent.

We will prioritise project proposals in areas experiencing socio-economic disadvantages and lacking quality green space. Please see sections on 'how applications will be assessed' for further details.

Organisations

Applications are open to:

- Community Groups, associated or unincorporated community associations
- Registered charities, including Charitable Incorporated Organisations (CIOs)
- Social Enterprises or Community Benefit Societies
- Community Interest Companies (CICs)
- Tenant and or Resident Associations or groups of residents
- Schools and academy trusts

PLEASE NOTE: Only one application per organisation can be submitted.

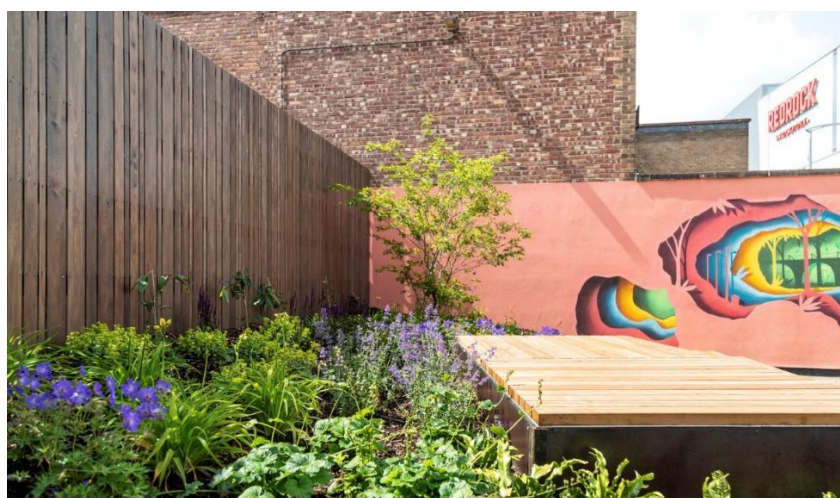
Accountable bodies

An accountable body is an organisation that is responsible for receiving the grant funding and ensuring it is spent in accordance with the conditions for which it was given. Types of groups who are eligible to apply for the fund are also eligible to act as an accountable body. Private organisations may act as



an accountable body. Please note: not all organisations will require an accountable body. The types of groups that may need an Accountable Body are newly formed groups who are constituted and do not have a bank account established in their name. Organisations, such as registered housing providers, local authorities or local parish councils, can act as accountable bodies to support an application from a community group or organisation.

By acting as an accountable body, these organisations will take on the legal responsibility for the project and would be financially accountable for any grant that is distributed to their partner organisation.



Bridgefield Street Pocket Park, Stockport (reproduced with permission from Planit-ie)

Some examples of successfully awarded projects can be viewed [here](#).

What items can be funded?

- **Capital or material costs:** Costs should focus in the main on the creation or improvement of greenspace. Where play equipment is proposed we are only able to fund sustainable natural play areas, and this should form only a small proportion of the total funding requested. Applications where equipment forms the majority of the funding requested will be turned down.
- **Equipment hire or purchase fees** related to the project activity.
- **Volunteer or participant costs** i.e. refreshments, purchase of personal protection equipment if needed for the type of work.
- **Labour costs** directly related to capital works of green space creation or enhancement for the project. For example, this is likely to cover the cost of landscapers or contractors to help with the construction of your project. Consider recruiting volunteers to help reduce costs and deliver activities. This would also include the cost of trained specialists, e.g engagement experts delivering a session.
- **Project management or direct staff costs** for project delivery, up to a maximum of 15% of the total project cost, including design, engagement leaders, project management, volunteer management.
- Contribution to **rent or hire of premises or towards utilities.**



- **Publication or engagement materials** related to community engagement for your project.
- **Maintenance costs post-project**, up to a maximum of 10% of total project cost. PLEASE NOTE: The remaining 10% of the award is paid once the project is completed and therefore successful groups are required to cover this 10% cost themselves during project delivery and claim back at the end.
- Other direct costs related to the project (such as personal protective equipment)

We would strongly encourage project proposals to have arrangements in place for post-project management via community adoption of any new or improved green spaces and volunteers long term.

What can't be funded?

The grant cannot be used towards the following costs:

- **Land purchase.**
- **Capital items** that are **not primarily about improving green space** i.e., improving a building, however, match funding can be used for this type of capital spending where this is part of an application.
- **Play equipment.** Where play equipment is proposed we are only able to fund sustainable natural play areas, and this should form only a small proportion of the total funding requested. Applications where equipment forms the majority of the funding requested will be turned down.
- **Projects that have already started or are a continuation of an existing project** or programme of work, unless it is clearly a distinct new phase of a former project with separate outcomes.
- Core staff costs or other core business costs that are not project-specific, e.g. I.T equipment, phone costs.
- Costs that are already covered by other funding.
- Costs that occurred prior to the grant award.
- Activities or applications that promote religious beliefs.
- Activities that may have a negative impact on the local environment. E.g tarmacking of a green area in the name of accessibility.
- Recoverable VAT.
- Business as usual activities e.g. routine management.

Match funding

Match funding refers to other funding you can receive from an additional source that will also be spent on delivering the project, and is an excellent way of getting support from multiple organisations or funds. **Applicants do not have to have any match funding**, but it is an added bonus when applying to the Green Spaces Fund as the Fund is seeking to draw in added value to all applications wherever possible. Securing matched funds can:

- make projects more robust and more able to bring maximum benefits to communities that need it most;
- help demonstrate how the project may continue beyond this funding and how it may be sustained;



- help the project to secure funds for items that the GSF fund does not cover, for example capital items that are not primarily about improving green space.

There is a greater expectation to secure match funding for larger bids and for these bids to consider legacy planning. Please see our website for other funding opportunities:

<https://gmenvfund.org/apply-funding/other-funding-opportunities>

Who cannot apply?

Applications from the following will be deemed ineligible:

- Sole individuals
- Groups that consist of one family
- Sole traders
- Statutory bodies
- Profit-making organisations i.e. limited companies
- Political groups or activities promoting political views
- Projects promoting a political or religious belief
- Applicants who have previously been funded by the Green Spaces Fund in rounds 1 – 4.

How do I apply for funding?

Applicants should use the guidance and templates provided to prepare their application, which should then be submitted [via our online portal](#).

What support is available to help?

Email: GSFAdvisors@groudwork.org.uk

We have a small team of Green Spaces Fund Advisors in place, offering support to community groups looking to apply to the Greater Manchester Green Spaces Fund. Their capacity is limited, and support is allocated on a case-by-case basis, but they can assist with tasks including refining your initial project idea, getting permission from landowners, considering how to best measure the difference you make, and completing the application form and the actual project delivery when you receive the grant.

They may challenge you to think about realistic timescales, how best to involve people or how to get the best value from your grant - it is all offered with the intention of making sure that your project is the success that you want it to be and will be sustainable beyond the grant period.

To find out more please see the [see the Green Spaces Fund website for further information](#)

District	Advisor	Email	Contact number
Manchester	Kieron McGlasson	kieron@sowthecity.org	07841382837
Bury	Lancashire Wildlife Trust	gfsadvisor@lancswt.org.uk	01204 663754
Bolton	Lancashire Wildlife Trust	gfsadvisor@lancswt.org.uk	01204 663754
Oldham	Nina Agnew	ninaagnew@rhs.org.uk	07955440333
Rochdale	Abbie Williams	abigail.williams@groundwork.org.uk	07977192459



Salford	Nina Agnew	ninaagnew@rhs.org.uk	07955440333
Trafford	Kieron McGlasson	kieron@sowthecity.org	07841382837
Wigan	Stephen Hodges	Stephen.Hodges@groundwork.org.uk	07810 123 993
Stockport	Agnes Allison	agnes@cityoftrees.org.uk	07518296818
Tameside	Agnes Allison	agnes@cityoftrees.org.uk	07518296818



Harpurhey Eco Streets Project (reproduced with permission from Groundwork)

HOW TO COMPLETE THE APPLICATION FORM

Please read this section carefully before submitting your application, as it provides guidance to help you complete the application form and the documents needed to apply to the fund.

We advise that you use this guidance and the downloadable application form to work on your application offline, allowing you to save, edit and review your application before you are ready to submit. Once you are ready, please copy and paste your answers into the application portal [here](#). If you wish, you can also save your application as you go on the FlexiGrant portal.

Alongside this you will also need to upload the essential following supporting documents:

- Your project activities – template provided
- Your project costs – template provided
- A recent bank statement showing three months of banking transactions – dated within the last three months, that contains a sort code and account number, a named person/entity and an address.
- Landowner permission – if relevant
- Planning permission - if relevant



We advise you to have these available to hand before you look to complete our online form.

ESSENTIAL CRITERIA

This section of the application form asks about our essential screening criteria, set out on page 4.

Land ownership

To award funding, we need to ensure that you have permission from the landowner to carry out your project. Please obtain this permission before applying for funding. Proof will be requested as part of the application submission. **PLEASE NOTE:** We require a commitment to maintaining the project, as delivered, for a minimum of 3 years following completion of the project.

Public accessibility

- The public's access to green spaces is a key aspiration of the fund.
- Projects must be on land which is publicly accessible, not just to the group applying, members or pupils. By publicly accessible, we mean that members of the wider community, not just group members delivering the project, are able to visit and engage with the project. **PLEASE NOTE:** This is not a reference to access routes.
- For the purpose of the Green Spaces Fund, we expect proposals to replicate the public access of parks, and either be open to the public at all times or from dawn to dusk.
- For example, this means that if your project will be taking place at a school or academy, it needs to be on land the public can access during and outside of school hours.
- Projects with no public access will not be funded.
- Confirmation must also be provided that the land will remain open to public access after the project is completed.

Planning permission

- If planning permission is required for your project, then this must be obtained and provided with your application. This will need to be uploaded as part of the application process via the portal.

ABOUT YOUR ORGANISATION OR GROUP

In the application form, we want to know some basic information about who is applying for funding, including the name of your organisation and when was it set up.

Please provide contact details for a main and secondary contact for your organisation or group. You can provide information about your organisation's website and social media sites, if applicable. If your organisation is a company or charity, please provide your registered number.



Accountable body

- If you are a newly formed community organisation or a community group you can ask an organisation such as your Local Authority, Local Parish Council or Registered Housing Provider to support your application.
- If an organisation has agreed to act as an accountable body for your project, you should include their details here in the application form.
- Partnering with an accountable body is not a requirement to apply nor are these obliged to act as an accountable body for your project.

Organisation type

- Select the organisation type which best applies to your organisation or group.

What your organisation does

- Please detail the mission and purpose of your organisation or group. This will be the description of your organisation used on our website and communication materials.

Your organisation's policies, procedures and insurance

To apply to the fund, we will also need to confirm that you have the following policies and insurances in place. If you don't have at the time of applying to the fund then these will either need to be put in place before receipt of the grant or provided through your accountable body.

- A safeguarding policy (*adults and children – if applicable*)
- A health and safety policy
- A governing document
- A photo consent policy/form for project participants
- Public liabilities insurance (*cost can be included in budget*)
- Employer's insurance (*if applicable*)
- A volunteer policy
- A risk assessment

when you submit your application, you also need to provide:

A recent bank statement showing:

- three months of banking transactions.
- dated within the last three months,
- that contains a sort code and account number,
- a named person/entity and an address of the organisation, group or accountable body that will be receiving the grant for your project proposal.

Please note, this cannot be a personal bank account. If you are applying as a newly formed group, without a named bank account, please consider working with an accountable body.



Managing risk and insurance

All organisations should have public liability insurance and, if appropriate, personal accident insurance that covers proposed physical activities and works. The National Council for Voluntary Organisation (NCVO) recommends trusted suppliers. Community organisations may also be eligible to join The Conservation Volunteers' (TCV) Community Network. This offers a range of benefits including discounted group insurance. Insurance costs can also be included as an item in your project budget.

All activities have risks that need to be mitigated and managed. Outdoor or countryside activities may have additional risks for participants such as involving the use of tools, proximity to open water, extreme weather etc. Full risk assessments should be undertaken, and mitigation measures put in place (e.g. training, supervision and first aid cover). Our Green Space Fund Advisors can help you to undertake a risk assessment.

ABOUT YOUR PROJECT

In this section, we want to know some basic information about your project, a project summary and location, the size of grant you are applying for and whether you have been supported by a Green Spaces Fund advisor.

Project summary

- Provide a brief introduction to your project. This will be the description of your project used on our website and communication materials.

Project location

- Provide a full address for your project location, a postcode and reference and a [what.3.words](#) for your project site.
- When awarding funding we will prioritise project proposals in areas of social and economic disadvantage. This will target the fund toward communities in greatest need, or on green space directly adjacent to these communities. Please see section Appendix 2 for further details.

Your project activities

- Describe all the activities that are going to take place during your project and any physical changes or benefits that you plan to achieve.
- Describe how you plan to maintain the project after the grant is used up.
- Include a proposed project start and end-date. Projects should start within 1 month of the initial payment having being received and be completed within 1 year.



What are you going to do and when?

- **Please note: projects cannot go beyond October 2025 and projects need to be ready to start delivery in October 2024.**
- Detail the main physical changes that your project will deliver and any engagement session or volunteer activity which will take place. For example, planting ten trees, adding a new habitat for wildlife or events to attract new visitors to your green space.
- Think about when each of the activities you have described above and when they will take place? Please use the provided Project Activity Template, available to download on the Flexi-Grant portal to complete this section.

Who will be involved in your project and what will they do?

- Think about who will deliver your activities and greenspace improvements.
- Detail any staff, communities or volunteers who will be involved in the project and outline what they will do.
- Outline any skills these staff and volunteers have to deliver these activities.

How will you maintain your project after the Green Spaces Fund?

- Think about how you have planned to ensure this project continues to do good work.
- Will a community group help with continuing the project after the funding has finished?
- Up to 10% of your total project budget can be allocated for post-project maintenance and management of a new or improved green space.

MEETING THE AIMS OF THE GREATER MANCHESTER GREEN SPACES FUND

In this section, we want to know how your project meets the three aims of the fund, to benefit communities in greatest need who are lacking public access to quality green spaces.

Aim 1: Benefit communities in greatest need of quality green space

The Greater Manchester Green Spaces Fund should be used to benefit communities most in need and where there is poorer public access to quality green space.

In this section, you need to answer three questions

- What are the issues with the availability of and public access to quality green space for your community and in your project area?
- What are the other key challenges facing your community and your project area?
- How has your project been developed and driven by the community?



Describe the local issues with access to green or blue space in your area? For example, does your project area lack a public park or garden nearby or have a small green space shared between a large number of people? What are the other key challenges facing your community? For example, does your community face issues around access to jobs or health care. How has your project been driven by the community? For example, describe how the community has developed the project and what role they have taken in the project proposal.

Aim 2: Tackling our biodiversity emergency

The Greater Manchester Green Spaces Fund aims to increase the quality of green and blue spaces to help tackle the biodiversity emergency. What will your project do to support nature and people by improving green spaces or blue spaces, or creating new spaces for nature?

Think about how your project will support the creation of new green space or improve green space. How might this benefit nature, by creating food or space for wildlife?

Aim 3: Encourage and empower communities to get involved with nature

How will your project support and empower communities to get involved with nature or take action for nature? Please describe what engagement and volunteering activities will take place as part of your project to engage people with the green space.

Think about who is the project aimed at and how will they be engaged? This could be those taking part in the project, a specific local group of residents, or the general community. For example, will your project encourage new visitors to access green space by adding a new feature or through events. Describe the specific activities that will take place and whether there will be any training or volunteering opportunities.



EVALUATING THE IMPACT

In this section, we want to understand how you will monitor the benefits of your project.

What will you monitor?

- After your project is completed, you will need to submit a post-project report and we will monitor the benefits to inform future grants.
- Please select the monitoring measures your organisation would be able to report on from the list provided.
- You can also suggest your own additional monitoring measures.

GRANT REQUESTED

In this section, please provide a breakdown of the main costs of your project.

Please note the minimum ask is £2,000.

- Please use the provided Project Costs Template on the Flexi-Grant portal to complete this section.
- Think about what each element of your project will cost.
- Please provide specific itemised cost not general amounts.
- A list of items eligible for funding can be found on page 6.
- Please indicate any additional funding that you have crowdfunded, secured or applied for alongside the Green Spaces Fund. Please also list any support in kind for the project.

The payment schedule will be provided when the grant is offered.

BANK DETAILS

Please provide a bank statement, showing three months transactional history and dated within 3 months of the organisation, group or accountable body that will be receiving the grant for your project proposal. Please note, this cannot be a personal bank account. If you are applying as a newly formed group, without a named bank account, please consider working with an accountable body.



How applications will be assessed

Our priority is to fund projects which benefit communities experiencing inequalities and lacking availability of and public access to quality green space.

Before applying, please check whether your project is within or near to our priority areas. The round is open to applicants from all areas but we will be prioritising project proposals that will benefit communities experiencing social or economic disadvantages, as indicated by the [index of multiple deprivation](#). We hope this will help to target the fund toward communities in greatest need. We will also take into account the evidence of need described in your application. To assess this for your area please look at our maps in Appendix 3 or visit Mapping GM (more guidance on maps is available Appendix 2) towards the end of this document.

Your application will also be assessed against all the criteria outlined on page 17.

Next steps

- Applicants will receive the outcome of their application after the assessment panel has met
- Work should commence when the first payment is received.
- Projects need to be completed by October 2025.
- Projects will need to complete a final project report (a template will be provided) and provide monitoring information as agreed to in the application form.
- Feedback will be provided to unsuccessful projects upon request.

More information

Have you got a question about the Green Spaces Fund that isn't covered here? [Visit the Green Spaces Fund website for more support and guidance](#). Alternatively, get in touch with our Green Spaces Fund Advisors, who can help you work through the application process: GSFAdvisors@groundwork.org.uk.



Pocket Park, Salford (reproduced with permission from Groundwork)



Appendix 1. How applications will be assessed - scoring criteria

Aim	Sub objective	How it is demonstrated in the application form	Scoring/ Weight %
Benefit communities in need of quality green space	Benefit communities where there is poor availability of and public access to green spaces	Evidence of need and spatial assessment of available green space	20
	Benefit communities experiencing inequalities	Evidence of need and spatial assessment of the Index of Multiple Deprivation	20
	Community driven	Evidence and assessment that the project has been developed and will be driven from within the community	15
Tackling our biodiversity and climate emergency	Enhance biodiversity	How the proposal will improve the site for nature	15
Encourage and empower communities to get involved in nature	Connect communities with nature	How people will be involved or engaged	15
Encourage sustainable, deliverable, and realistic projects	Encouraging deliverable and sustainable projects	How the proposal demonstrates a feasible and deliverable project plan.	10
		How the proposal plans for continuation after the grant is used	5
Total			100



This page has intentionally been left blank



Appendix 2. Understand our priority criteria

Communities experiencing inequalities

The aim of the fund is to benefit communities facing inequalities that lack availability of and public access to green space.

There are many different types of inequalities experienced by citizens of Greater Manchester. For the purpose of the Green Spaces Fund we have used a combined measure of disadvantage - the index of multiple deprivation. This is a widely-used national government dataset that classifies areas of Greater Manchester in terms of relative disadvantage, by combining multiple components including income, employment, education, health, crime, barriers to housing and services and living environment. You can read more about the index of multiple deprivation [here](#).

We will use the Index of Multiple Deprivation deciles to help prioritise project proposals from the areas of highest disadvantage in Greater Manchester, which also lack access to quality green and blue space, or projects which would take place on green or blue spaces which are directly accessible to these communities. An Index of Multiple Deprivation Decile of 1 indicates that an area is in the 10% most deprived areas of Greater Manchester, a decile score of 10 indicates that an area is in the least deprived areas of Greater Manchester. The lower the decile, between 1 to 10, the higher the priority of your project area.

Check where your area is ranked using either of the following:

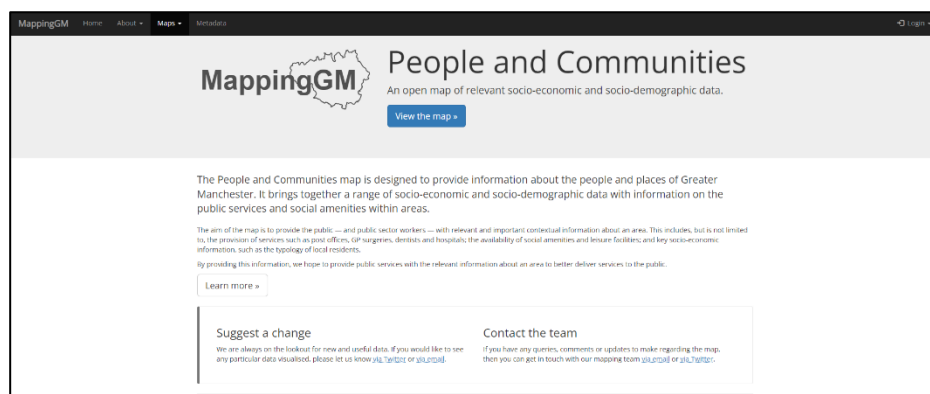
- Checking the Index of Multiple Deprivation decile of your project using [our mapping GM](#), or
- Using a [postcode checker](#)

We have also provided maps at the end of this document.


How to use Mapping GM to get your areas Index of Multiple Deprivation rank

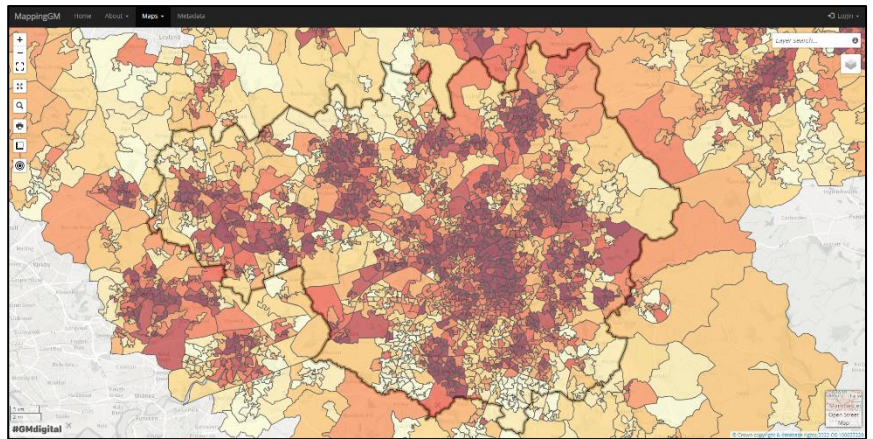
You can look at a map of the [index of multiple deprivation on Mapping GM](#).


Step 1. Go to the map [on Mapping GM](#). This link will take you to a welcome page, as shown to the right. Click on the blue button which reads 'view the map'. A pop-up box will appear asking you to read and accept the [terms, conditions and disclaimer](#), after you have read these click the green button to proceed.

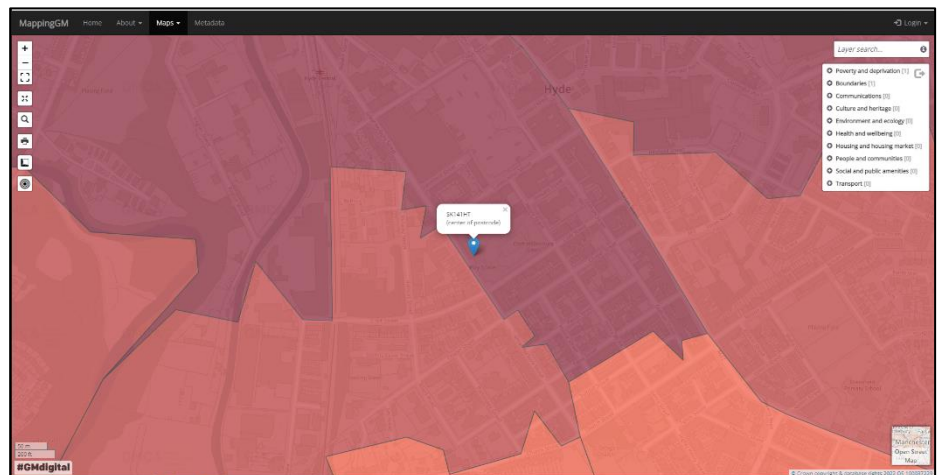




Step 2. You should now see a map of Greater Manchester, as shown to the right. This image is showing index of multiple deprivation deciles across the whole of Greater Manchester. To navigate to your area, click on the search icon  on the left of the screen. Type in your project postcode and press enter to navigate to your area.

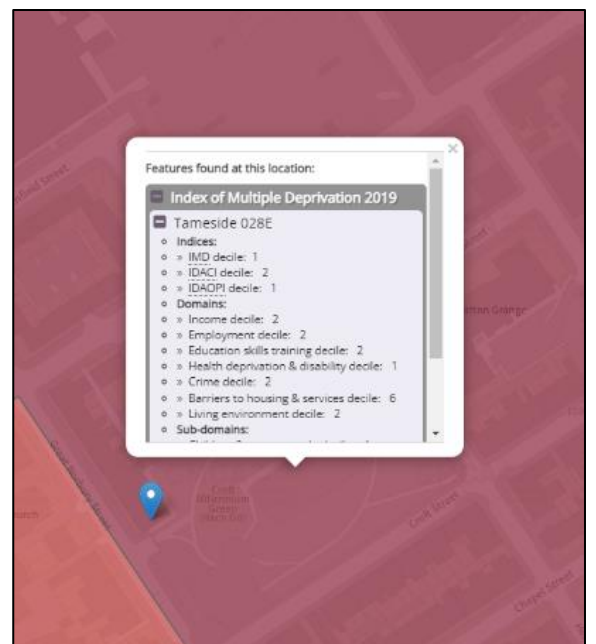


Step 3. This will navigate to the central point of the postcode you've entered, which will be highlighted by a blue pin symbol  on your screen. Navigate to your project area on the map, hover your cursor or mouse over your project area and left click.



Step 4. Once you have clicked on your project area, another pop-up will appear on the map labelled 'Index of multiple deprivation 2019', an example of this is shown below. Look for the line reading 'IMD Decile' and then look across at the numbers to the right. This will be a number from 1 to 10.

In the example to the right, the score for the area is 1. This means that this area is within the 10% most deprived areas of Greater Manchester. A score of 2 indicates that this area is in the 20% most deprived areas of Greater Manchester and so on. Remember that we will also consider applications for improvements to green space which border areas experiencing inequalities, so have a look around to check the scores of the areas which border your project area.

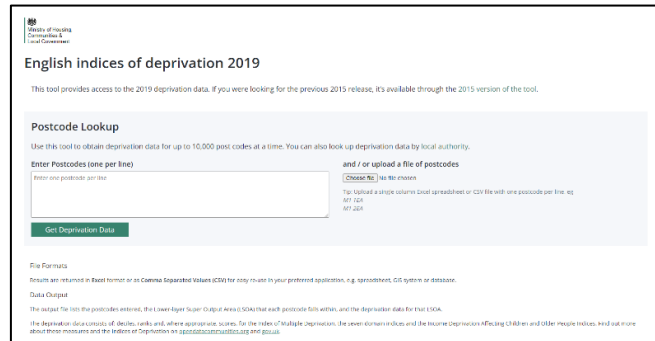




How to use a postcode checker to get your areas Index of Multiple Deprivation rank

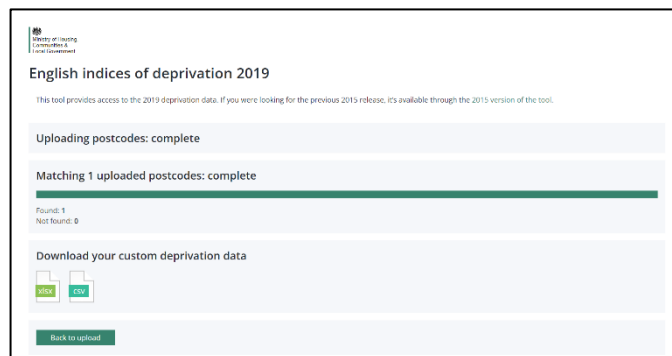
You can also use a postcode checker to identify the Index of Multiple Deprivation decile for your project postcode.

Step 1. Go to this website: <https://imd-by-postcode.opendatacommunities.org/imd/2019>. This should take you to the webpage shown in the image to the right.



Step 2. Enter your project postcode in the white box under 'Postcode Lookup'. Then click on the green button labelled - 'Get Deprivation Data'.

Step 3. Once you have clicked the 'Get Deprivation Data' button the website will upload the postcode and will change to the image shown to the right. To retrieve your data, click on the xlsx file icon, under the 'download your custom deprivation data' heading. Clicking on this will start to download an excel file to your computer.



Step 4. Once the file has downloaded, open the Excel file.

The IMD decile for your postcode will be in Column F. This will be a number from 1 to 10.

In this example, the score for the area is 1. This means that this is an area which is within the 10% most deprived areas of Greater Manchester. A score of 2 indicates that is in the 20% most deprived areas of Greater Manchester and so on. Remember that we will prioritise application for improvements to greenspace within or which border areas of high deprivation, so check some of the postcode of areas bordering the green space or public space where your project is based.

1	Postcode	LSOA code	LSOA Name	Index of Multiple Deprivation	Income Deprivation	Income Deprivation Affecting Children	Employment Deprivation	Employment Deprivation	Employment Deprivation	Education Deprivation		
2	SK14 1HT	Live	E0100604C	Tameside	2557	1	3518	2	0.262	5027	2	0.169
3												
4												
5												
6												
7												
8												
9												
10												



Availability of and public access to greenspace

The aim of the fund is to benefit communities facing inequalities that lack public access to green space. You can provide photos, descriptions and local knowledge in the application form to evidence the need to improve or create greenspace in your project area.

You can also look at maps of green space in your area to help inform and evidence your project proposal.

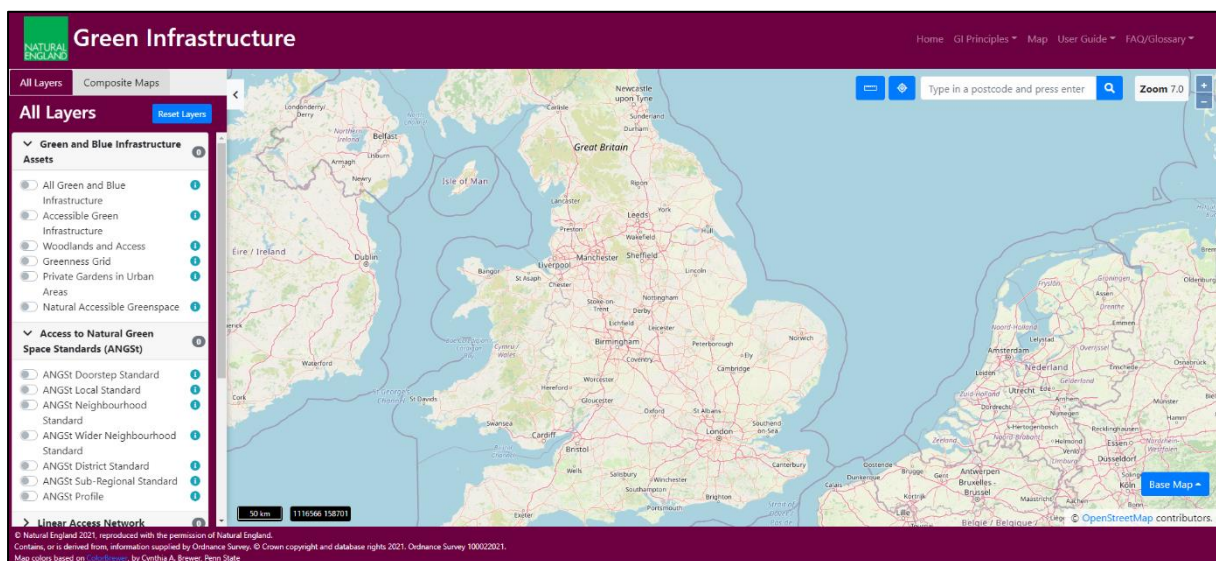
Using the Natural England Green Infrastructure Map

Natural England provide an online map portal which can help you look at maps of green space and greenness across Greater Manchester.

Step 1. Go to the Natural England maps by using this link:

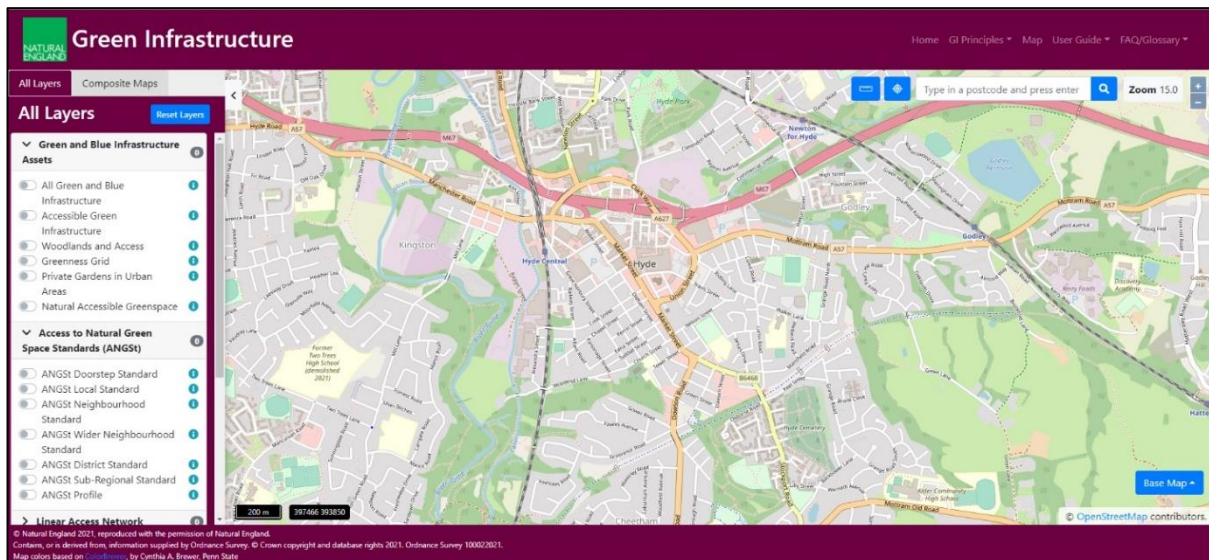
<https://designatedsites.naturalengland.org.uk/GreenInfrastructure/Map.aspx>

The landing page shows a map of the whole of England and the UK. Use the search bar at the top right of the screen to search for your project area by entering your project postcode.





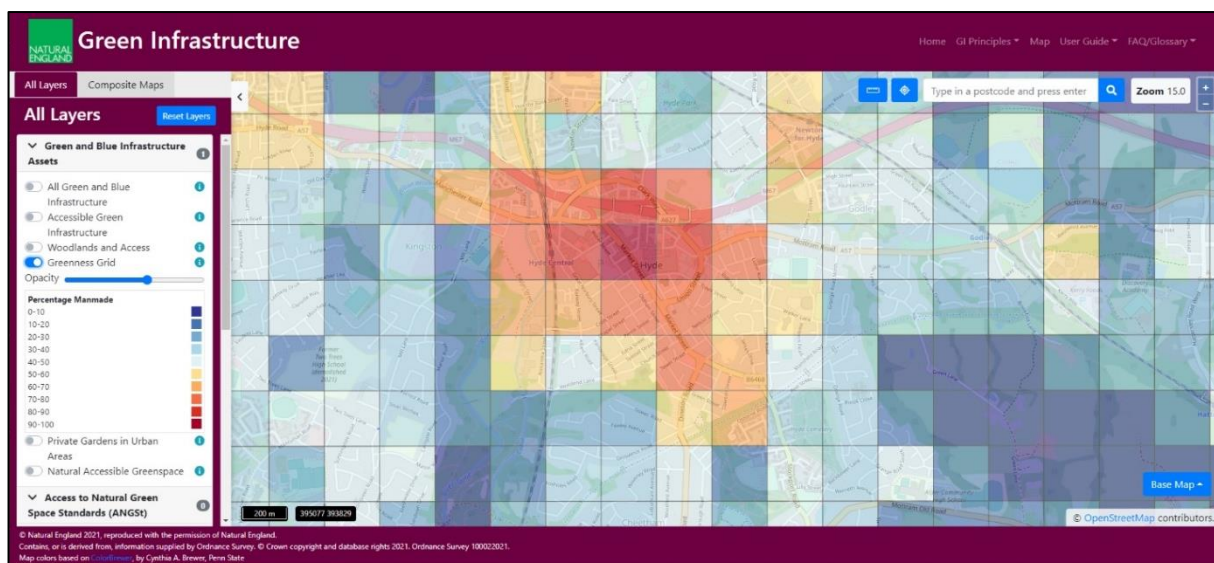
Step 2. Once you have found your project location. You can then turn on and off the different maps of green space on the left-hand side of the screen.



Step 3. We would recommend looking at maps such as the **Greenness Grid**, which is the the fourth one down on the list of All Layers.

Turn on this map using the switch button next to the label. An example of the Greenness Grid is shown below.

The Greenness Grid divides the whole of Greater Manchester into a grid and assesses what proportion of each of these grid squares is made up of greenery or plants compared to built surfaces such as pavements, buildings or roads. Grid squares coloured in red and orange have less greenery, whilst grid squares coloured in blue have more greenery.



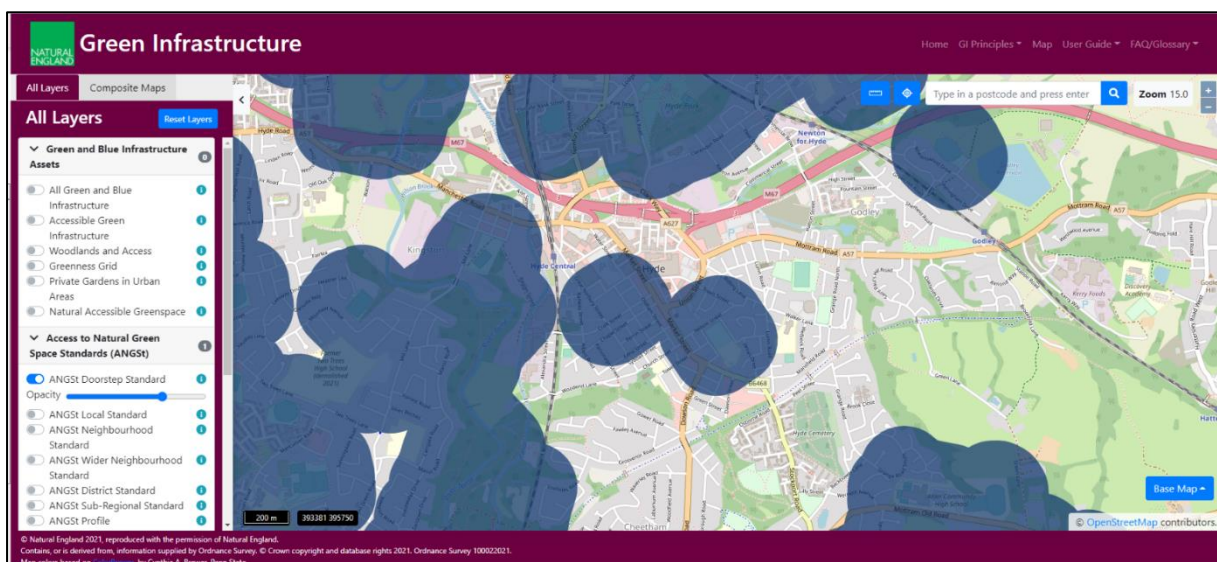


Please note that the Greenness Grid does not distinguish between public or private green spaces, nor does it capture the quality of these green spaces. But it can help you think about what spaces are really lacking greenery in your area.

Step 4. You can also look at lots of other maps on the same Natural England website site by switching off the greenness grid and switching on other maps.

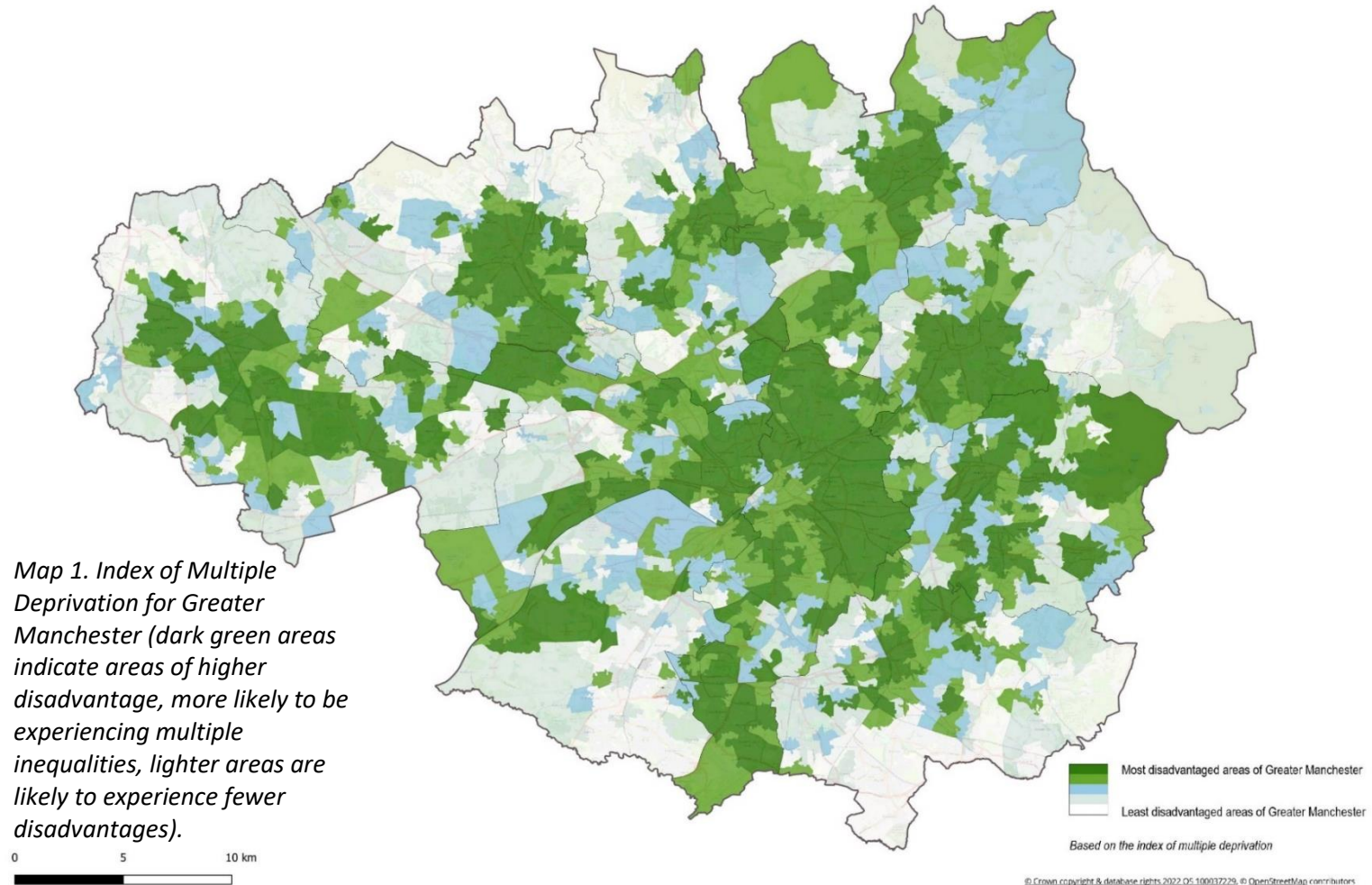
We would recommend looking at the Access to Natural Greenspace (ANGST) Doorstep Standard. It can help identifying areas lacking accessible green space close by. An ‘accessible green space’ refers to a publicly accessible green space such as a public park or public garden. This Doorstep Standard map shows areas which have at least 0.5 hectares (roughly the size of a football field) of accessible natural greenspace within 200 metres (less than 5 mins walk), and those that do not.

An example of the ANGST Doorstep Standard map is shown below. Those areas shaded in blue are within 200m of a 0.5ha greenspace, those outside of the blue shaded areas do not.



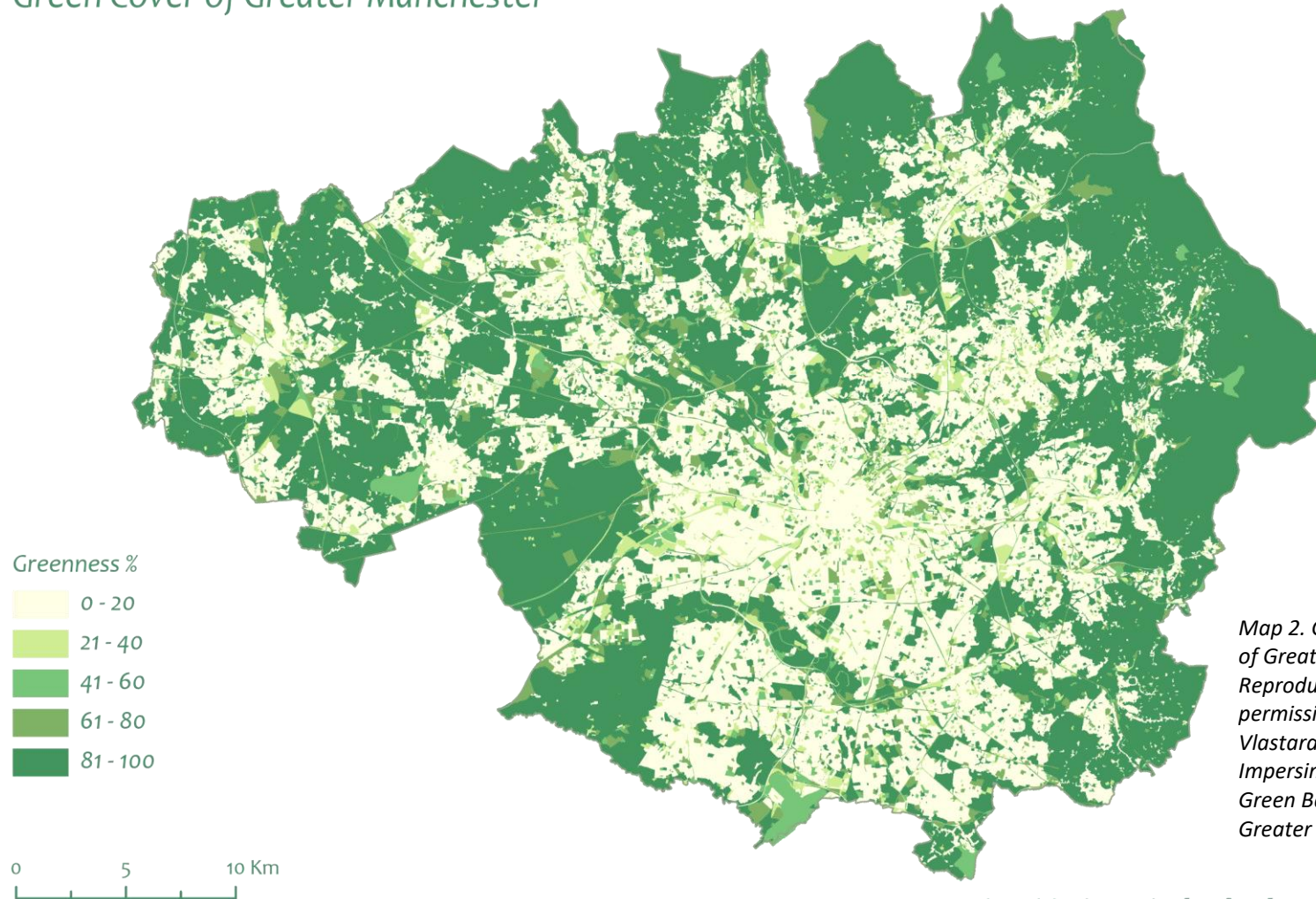


Appendix 3. Maps green space and inequalities

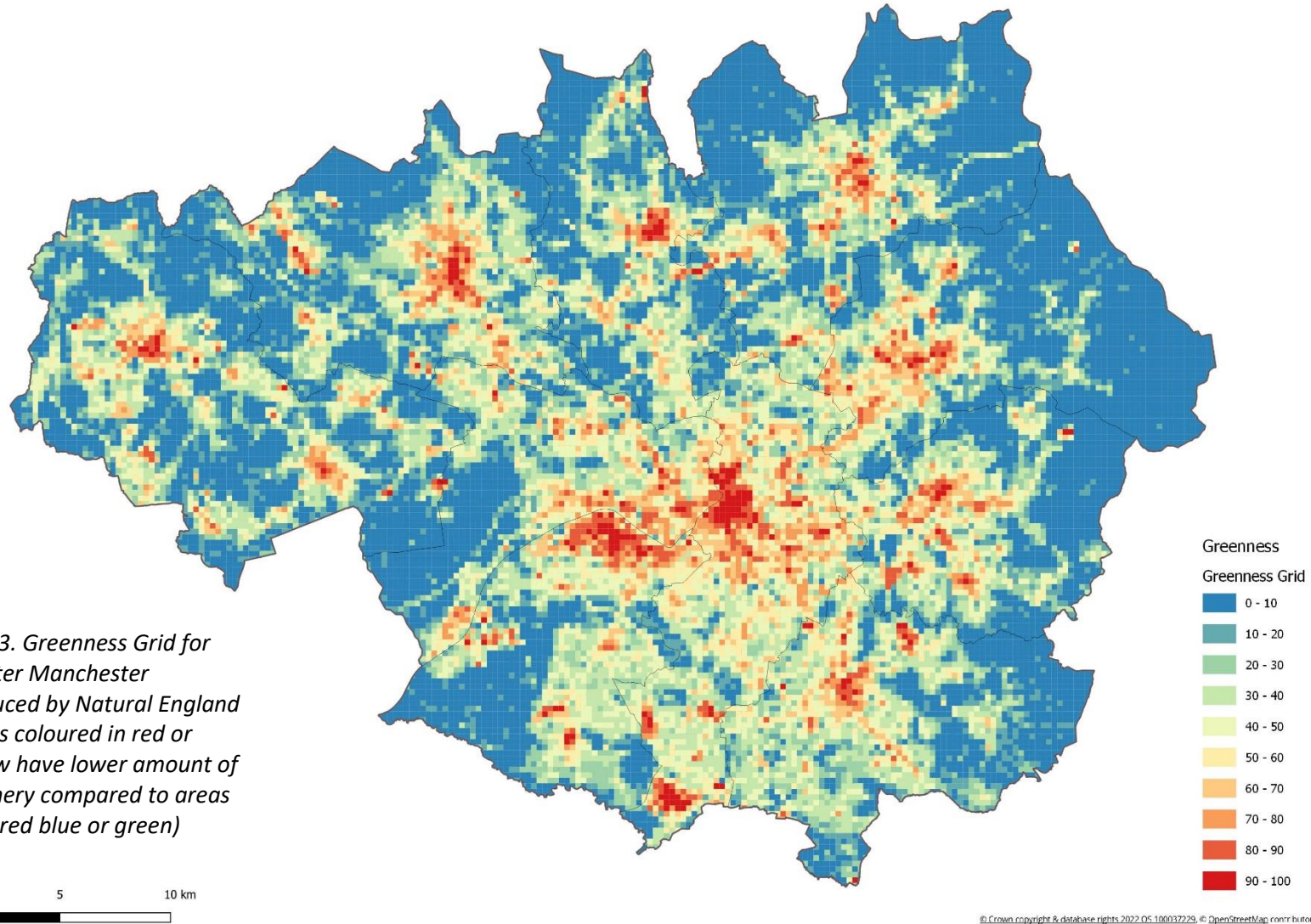




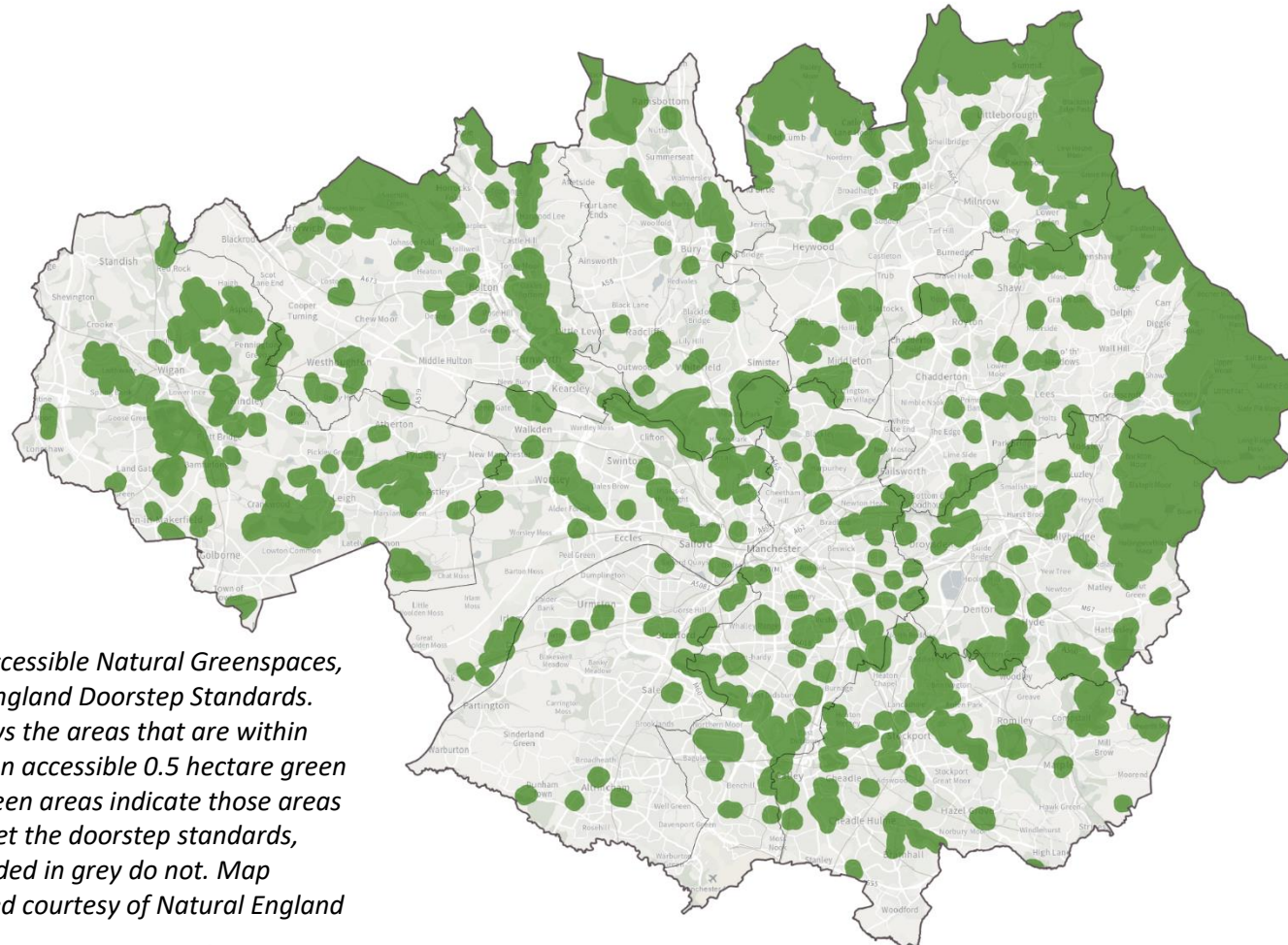
Green Cover of Greater Manchester



Map 2. Green cover map of Greater Manchester. Reproduced with permission from Vlastaras, V. and Impersimi, E., (2022) A Green Baseline for Greater Manchester.



Map 3. Greenness Grid for Greater Manchester produced by Natural England (areas coloured in red or yellow have lower amount of greenery compared to areas coloured blue or green)



Map 4. Accessible Natural Greenspaces, Natural England Doorstep Standards. Map shows the areas that are within 200m of an accessible 0.5 hectare green space. Green areas indicate those areas which meet the doorstep standards, those shaded in grey do not. Map reproduced courtesy of Natural England

